

Farmstead of David A & Rosa M Toews and their three sons, Galen, Arrel, & Myron

Located at the S end of NE/4 20-24N-6W in the Kremlin Township of Garfield County OK, near the quarter-mile line on the "Half-Section Road."

"Wall Street" forms the E boundary of this farm and the Kremlin blacktop (current Keowee Road) the W boundary.

This was also the farmstead of George P & Anna Buller Toews, parents of David Abraham, Peter I, Henry G, Jacob, Anna (Bush), & Clara Toews Voth.

These slides initially prepared by Arrel Toews, with much helpful input from his brother Myron in August 2015. In many instances, all we have are our memories for reconstruction of years past. Revised 5 Feb 2024



Heizer Bros Studio
Enid, Okla.

**Vintage photo of George P & Anna Toews
and later David & Rosa Toews farmstead
(note summer kitchen, garage, windmill, & haystack behind porch)
2nd auto @ extreme R; probably George P in auto; ca 1920s**



**Vintage photo of George P & Anna Toews
and later David & Rosa Toews farmstead
showing more of the yard
(note summer kitchen, garage, original machine shed &
barn with buggy/wagon between garage and shed)
probably George P in auto; ca 1920s**

Aerial Map

TRACT #2

17

16

BLACKTOP



11.09
IP

KrB

C

10.47

KrB

C

2.91

NP

7.71

C

27.20

NP

7.71

78.73

NP



TRACT #3

NP

IP

20.82

North Garfield

Vc2

KrB

MdB

20-24N-6W

Vc2

21-24N-6W

KrB

Ec

W

Vc2

KrA

KrA

29

28

map center: 36° 32' 34.91, 97° 51' 18.11

scale: 9946

20-24N-6W

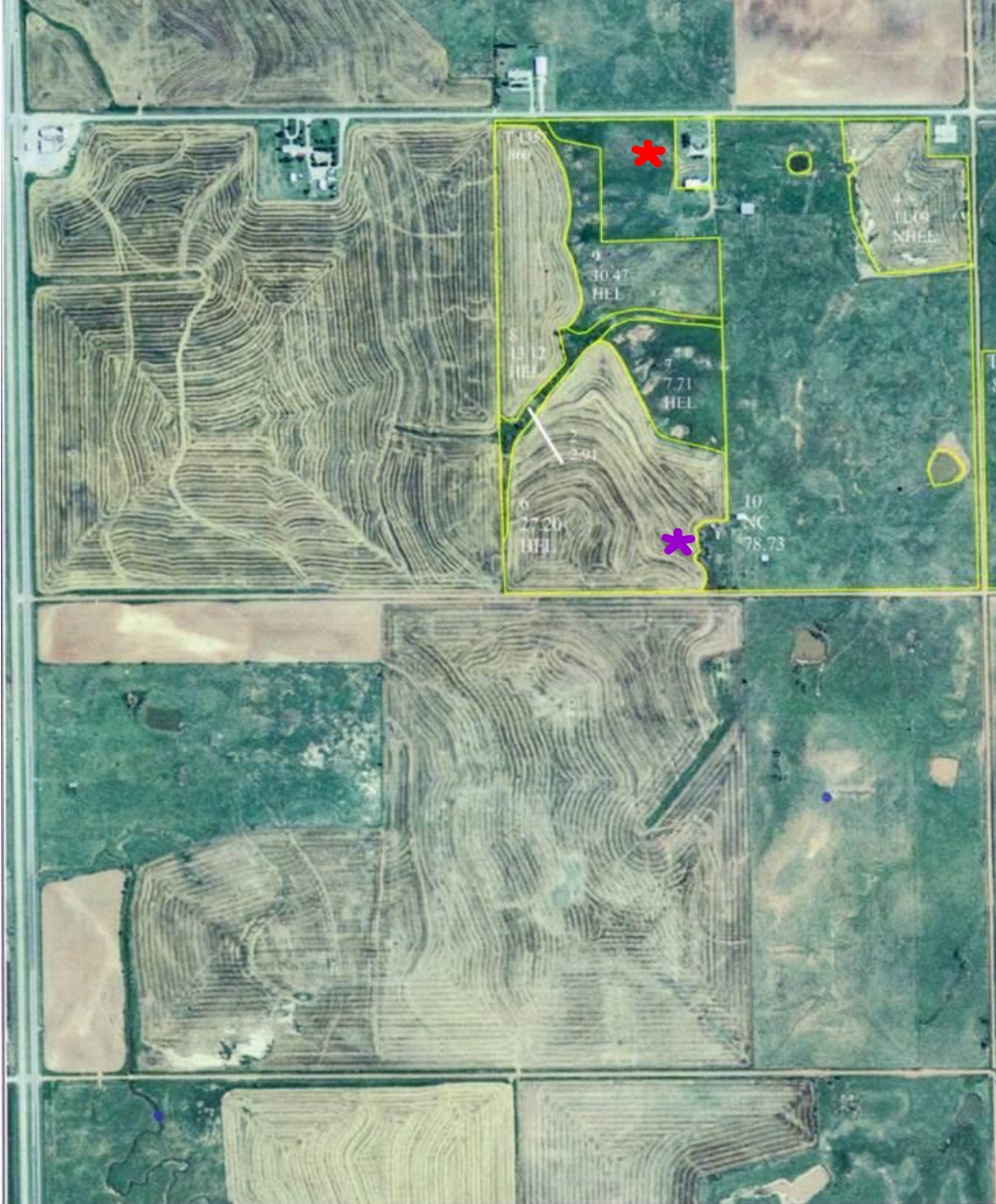
N

**Aerial ASCS map of
20-24N-6W and
21-24N-6W, with
DAT home-place and "40"
outlined in yellow**

**New farmstead* along Kremlin
blacktop & original farm-
stead* along half-section
road (N Garfield) are both
visible to the trained eye.**

***OG&E substation visible in
extreme NE corner of farm.
(photo ~2012)**

**Note resolution is high enough
to allow some magnification of
the image**



Aerial ASCS map of entire section 20-24N-6W, with DAT home-place (NE/4) outlined in yellow

New farmstead* along Kremlin blacktop & original farmstead* along half-section road (N Garfield) are both visible to the trained eye.

(map printed 2005)

Other farmsteads & "The Midway" (upper L) are visible. US-81 is @ extreme L border

Mike Streck owns E 80, Bill Toews family remainder of S half-section

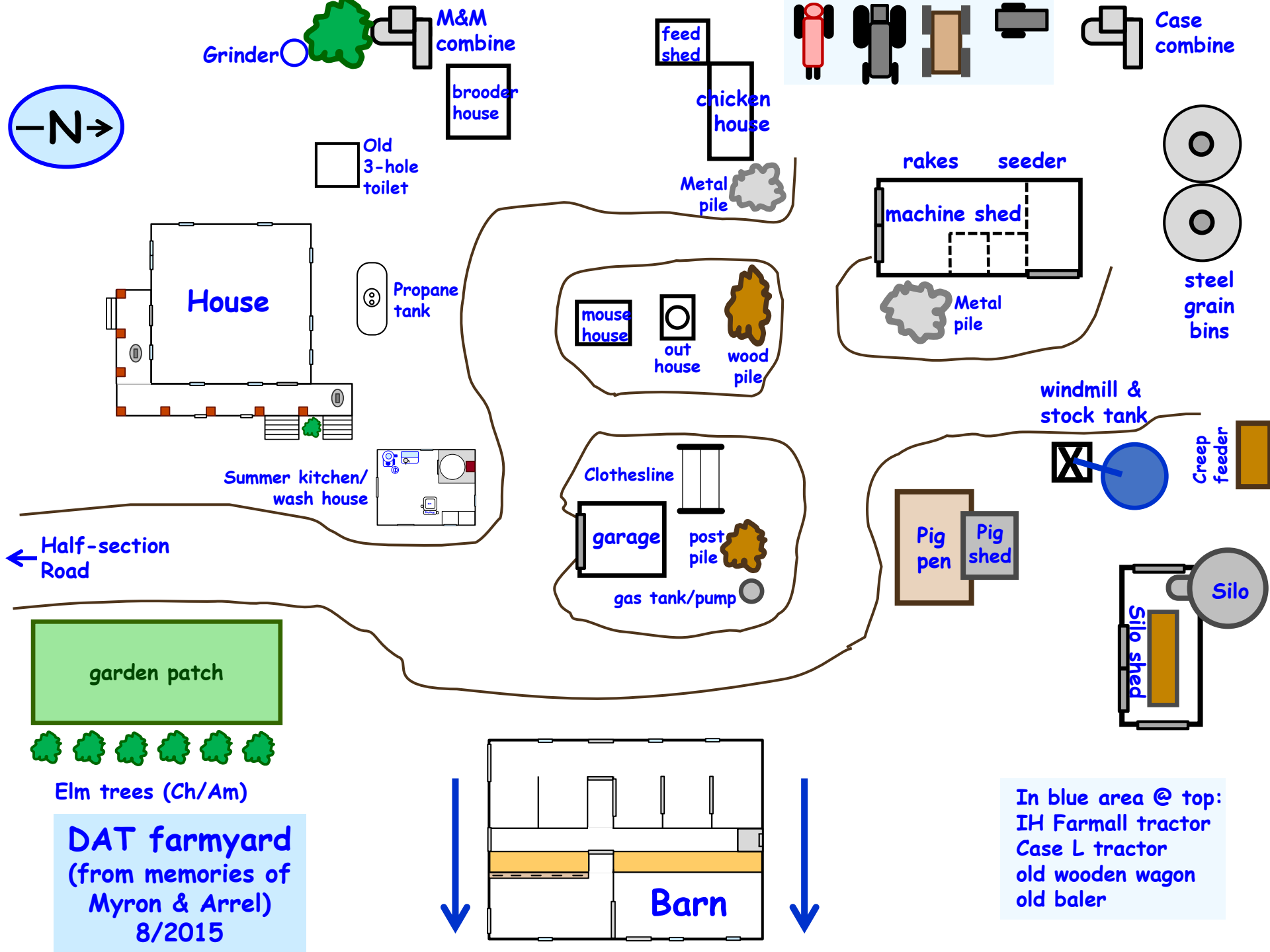
This seems to be a higher-resolution photo; ponds and buildings are more visible. Plus, it is entire section, not half of 2 sections as in previous page.

Not to Scale



Sec-Twp-Rng: 20-24N-6W

Map Printed: Mar 25, 2005



Panorama of David A & Rosa M Toews farm, looking S from top of silo [1/1974]



- 1. House footprint
 - 2. Summer kitchen/wash house
 - 3. Garage
 - 4. "Mouse house"
 - 5. Outhouse seat/floor
 - 6. Machine shed to R
 - 7. Pig pen and sty
 - 8. Gas pump/tank/post pile
 - 9. Sheep barn (old barn foundation)
 - 10. Corral
 - 11. Garden patch
 - 12. George Ediger pasture
 - 13. Georgy Janzen Homeplace
- Orange line denotes approx limits of our "driveway" - visible loop originally used infrequently**

Some comments on previous slide

Lots of tornado debris, particularly roof fragments and rafters (some stuck seriously into the ground) ended up in George Ediger's pasture, about where the "12" is positioned. See [1961 DAT TORNADO](#) on our [ToewsVothKremlin.info website](#) for photos and more information.

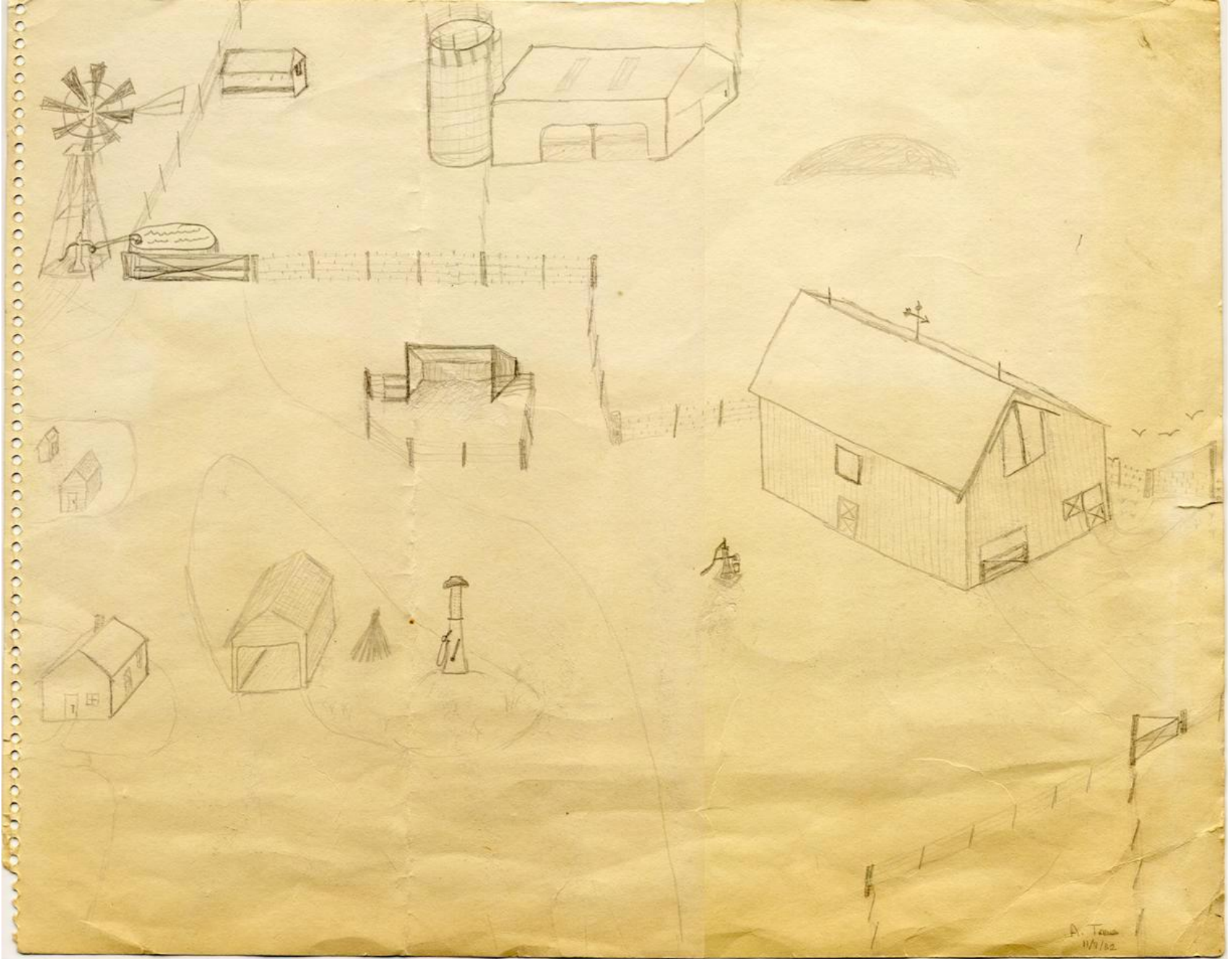
We did have a "loop" driveway, but it was all contained in the orange area of the above slide. There was a larger loop around where the red pickup is, continuing W to the front of the machine shed, then back east behind the wash house/summer kitchen, but this was used primarily for tractor and truck traffic. The W edge of the prominent loop in the slide was basically just a foot path when we lived there - it became a real traffic lane when we no longer used the machine shed, but still went to the silo shed.

The farm (320 acres) denoted "13" was the homeplace of George & Anna Janzen, maternal grandparents of Ellis & Dennis Toews (& Ron Janzen - who married Loretta Schlichting - and his siblings). Farmstead was $\frac{1}{4}$ mi W, across the half-section road.

Whoever took those 2 photos should have taken a third, looking more W to cover the machine shed & grain bins and more for a much more complete panorama. Shame on him!

Nothing much could be made to grow in our garden patch (except potato beetles!), despite Herculean efforts, including irrigation with a water bucket and watering can. We did have leaf lettuce, onions, green beans, and small potatoes. There were 6 elm trees to the E, visible in the picture, alternating Chinese and American varieties.

Note that we have another website - [ToewsBrothersKremlin.info](#) with lots of historical information on Kremlin OK, Kremlin Schools, railroads and area train wrecks, and more. Worth a look!



Sketch of E half of DAT homeplace yard by Arrel Toews (11/4/1982)



Dad by summer kitchen
(July 1985)



↑ Erin (5) in front of mouse house & machine shed
(July 1985)



Upper left: note
chicken house &
porch steps @ L;
machine shed @ R

Photos by
Arrel Toews

Mom by brooder house
(L) & machine shed (R)
both August 1994





M&M combine & elm tree W of brooder house

photos by
Arrel Toews
all July 1982

Our L Case tractor W of machine shed
with tree growing through it





Floor plans for the home of David A & Rosa M Toews and their sons, Galen, Arrel, & Myron [constructed from memories of Arrel & Myron, August 2015] follow. View above is looking NW from Half-Section Road Plan for summer kitchen/wash house (far R) is also included



Rosa M Toews & our new 1960 Chevrolet Bel Air 4-door hardtop sport sedan, in front of our house. Note the stylish wide white sidewall tires! Waiting bench from Kremlin depot on porch.



Two kittens in N porch vent of our house. These vents connected to the cellar/under-house area, and had screen barriers at the back. A nice cool place for kitties!



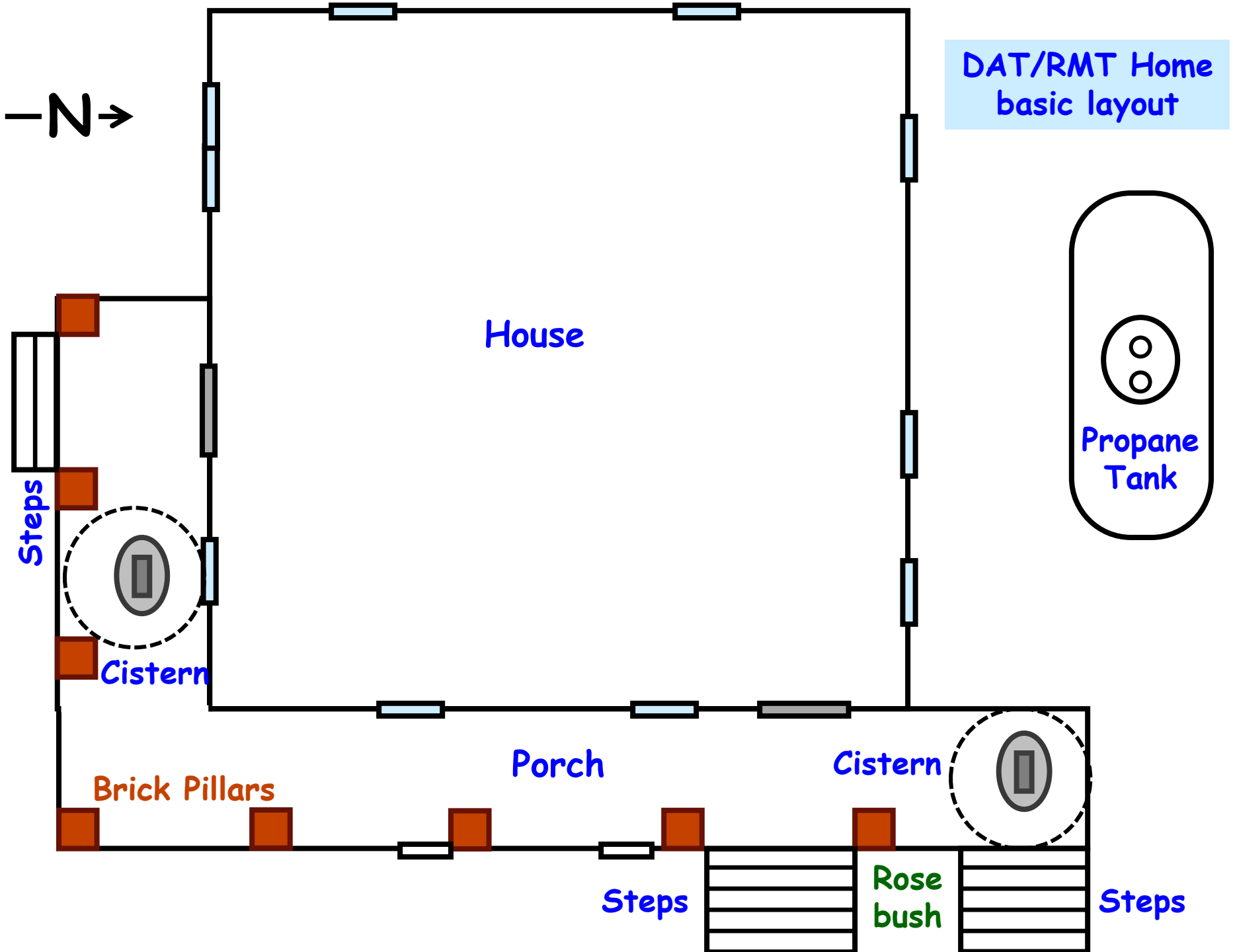
Mom's flower patch in the SW corner of our lawn. There was a yellow rose bush behind the zinnias (& a white rose bush in the SE corner of the lawn). Both rose bushes were especially important on Mother's & Father's Day Sunday services - we all wore yellow roses for living parents and white roses for deceased parents. Note the rectangular railroad tie corner-post and cedar trees lining the Half-section Road in the background.



Toews Brothers
(L/R: Galen, Arrel, Myron)
& Spot
heading to school
Bus driver is Jake Voth Jr

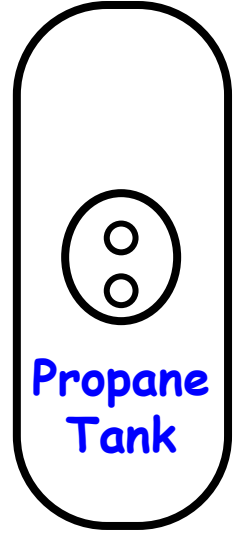
Heading to school on a
foggy morning
(L/R: Arrel, Spot, Galen, Myron)
Kremlin elevators barely
visible @ center back



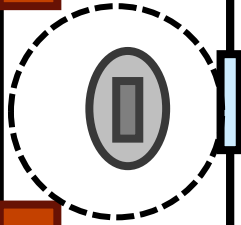


DAT/RMT Home
basic layout

House



Steps

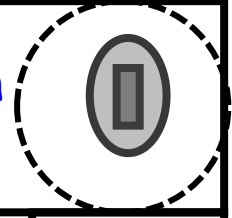


Cistern

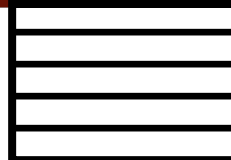
Brick Pillars

Porch

Cistern



Steps

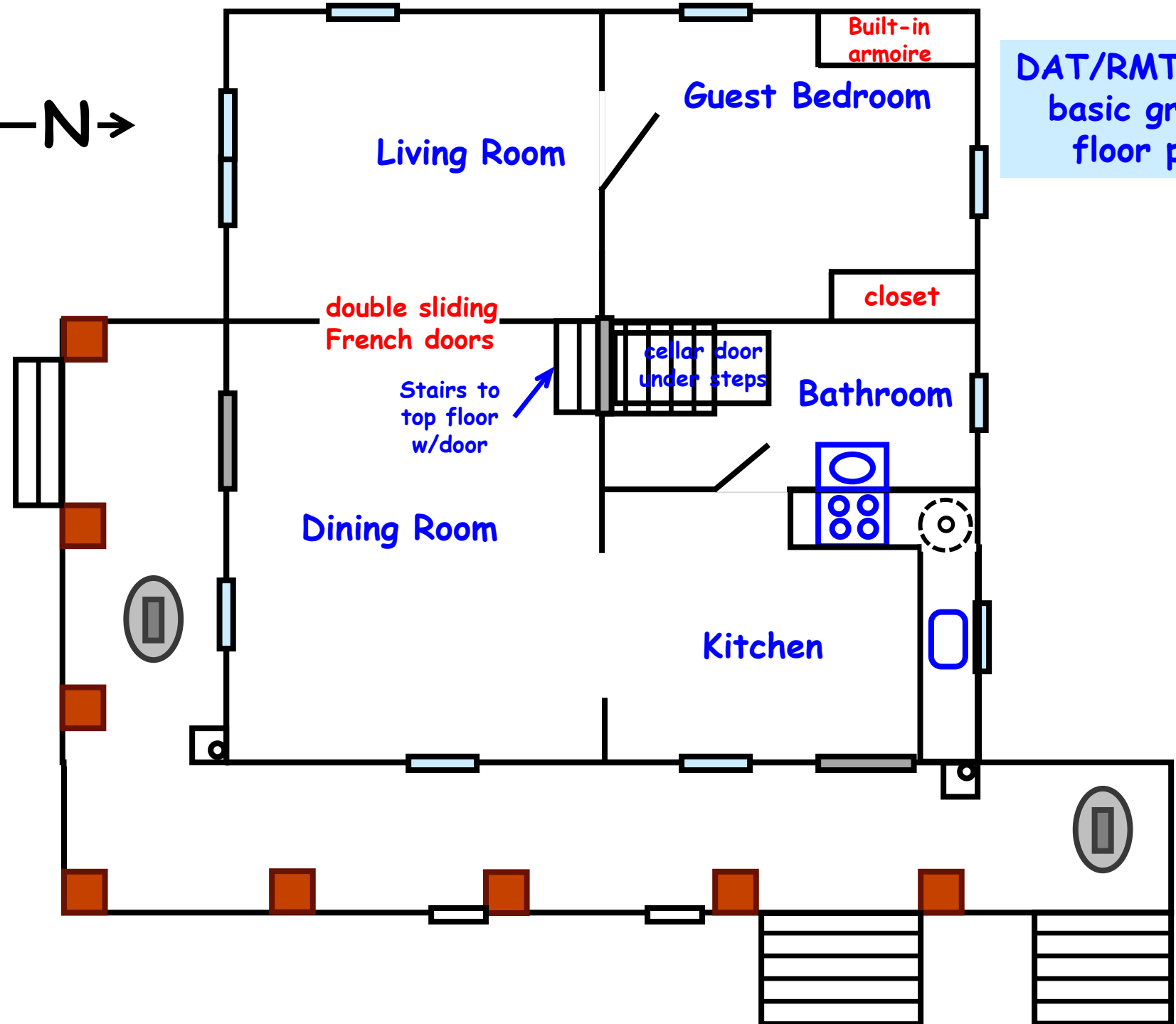


Rose bush

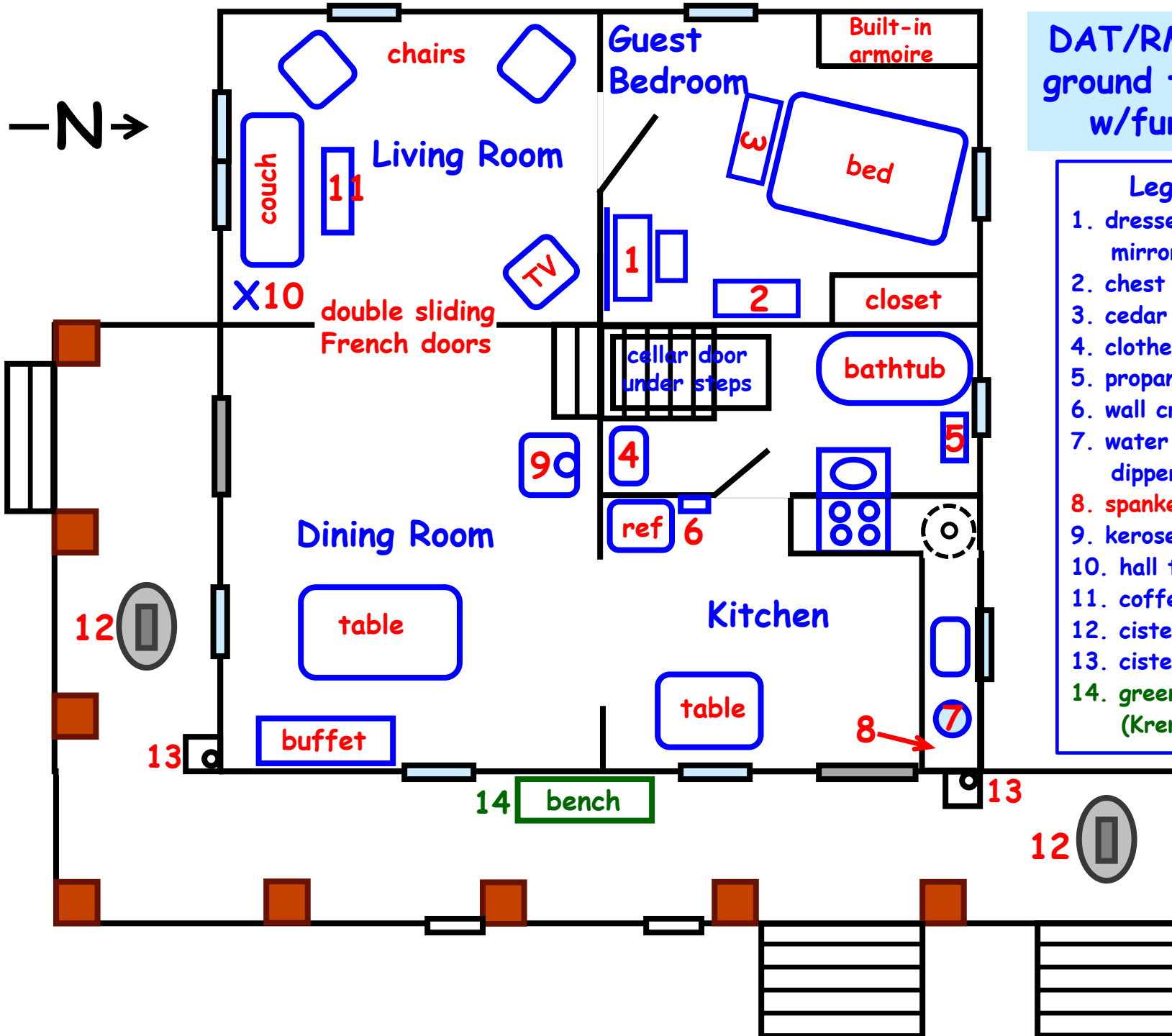


Steps

DAT/RMT Home
basic ground
floor plan



DAT/RMT Home ground floor plan w/furniture



Legend

1. dresser w/ large mirror & bench
2. chest of drawers
3. cedar chest
4. clothes hamper
5. propane heater
6. wall crank phone
7. water bucket & dipper
8. spanker drawer!!
9. kerosene stove
10. hall tree
11. coffee table
12. cisterns
13. cistern filters
14. green porch bench (Kremlin depot)



DAT/RMT Home
basic upstairs
floor plan

Dave & Rosa's
Bedroom

closet

closet

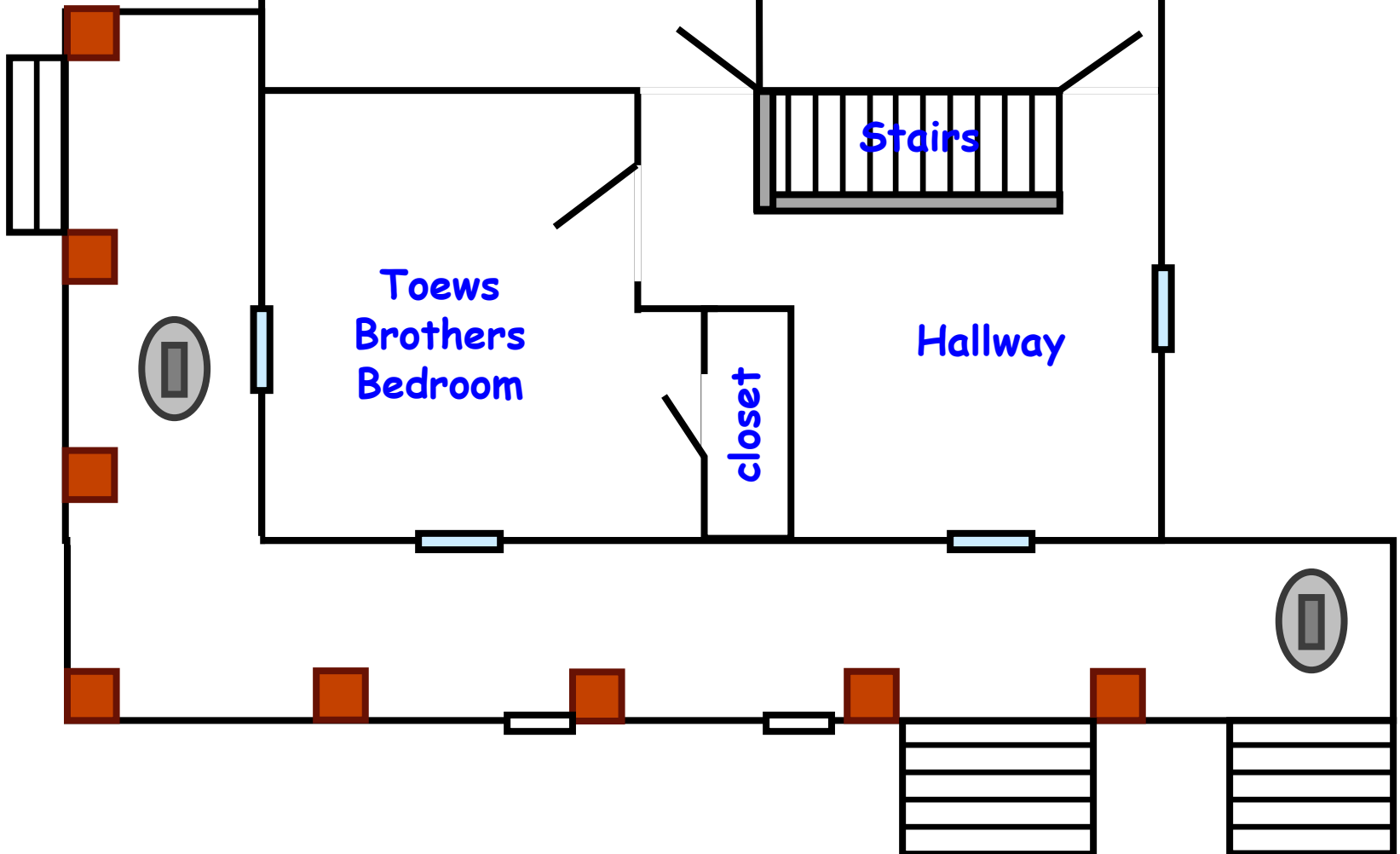
Junk
Room

Stairs

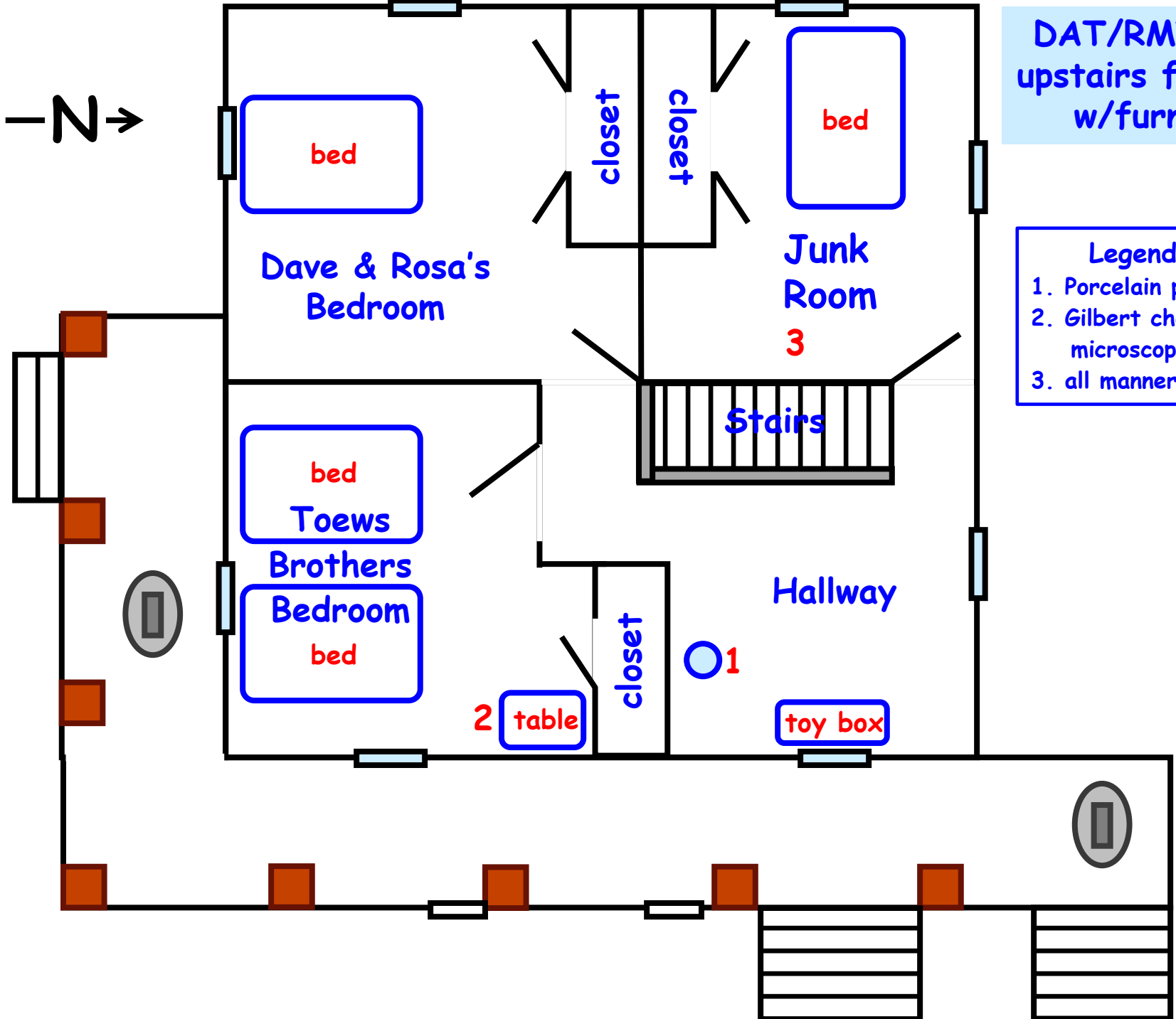
Toews
Brothers
Bedroom

closet

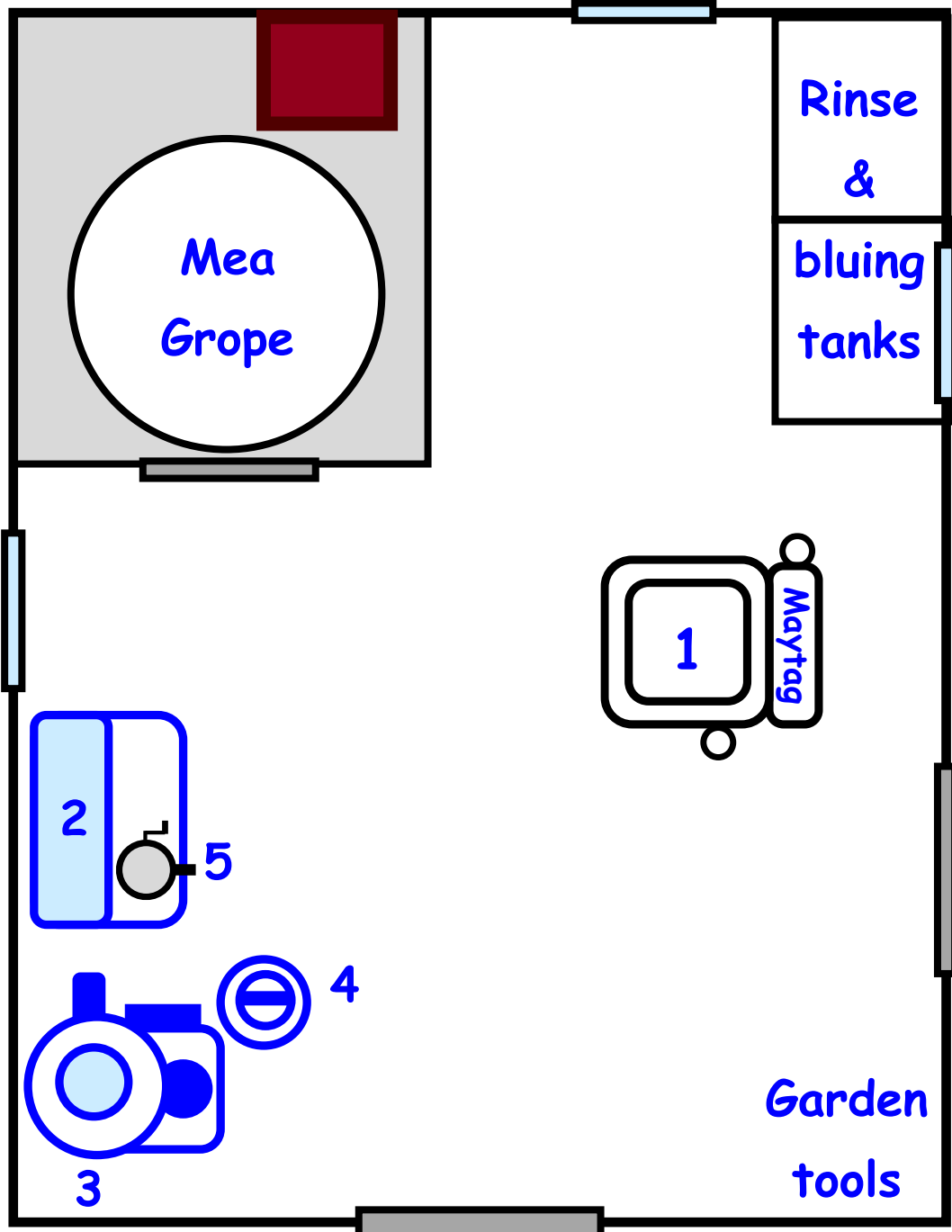
Hallway



DAT/RMT Home upstairs floor plan w/furniture



- Legend**
- 1. Porcelain potty w/lid
 - 2. Gilbert chemistry & microscope sets here
 - 3. all manner of junk



DAT/RMT Summer Kitchen/
Wash House
floor plan



Legend

- 1. Maytag wringer-type washing machine
- 2. "Hoosier" hutch w/porcelain tabletop
- 3. DeLaval cream separator
- 4. Cream can (Gold Spot Dairy # 7337)
- 5. Sausage stuffer



DAT barn floor plans & elevations

Note there are not any good pictures of our barn - what I have found are shown below (help appreciated):



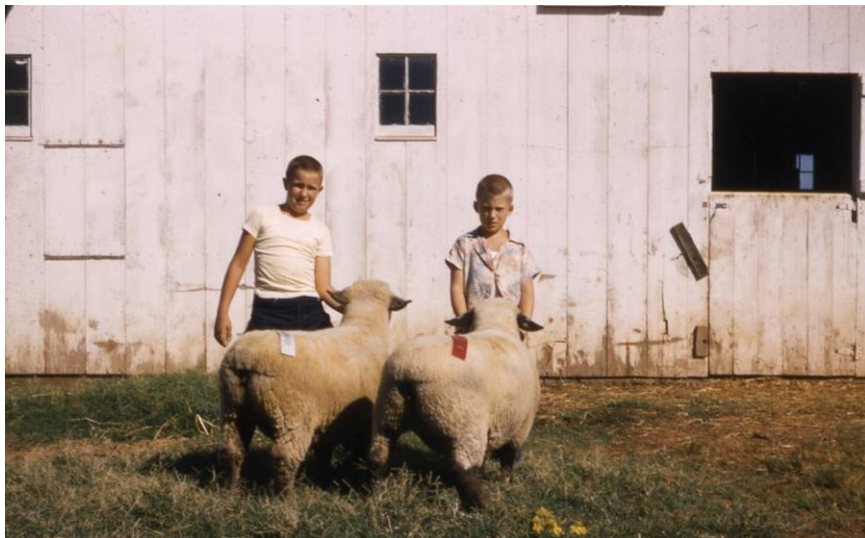
Arrel (9 mos)

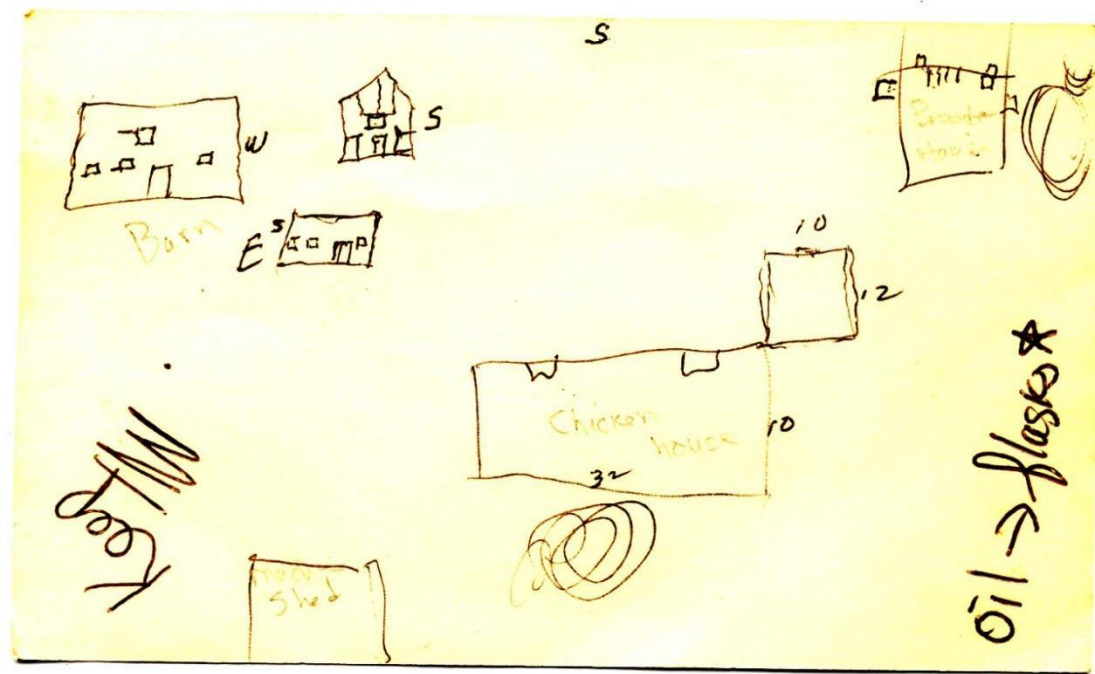


Arrel - 1st B-day (July 1949)

Galen & Arrel (ca 1957)

Kathy Regier, Galen & Arrel





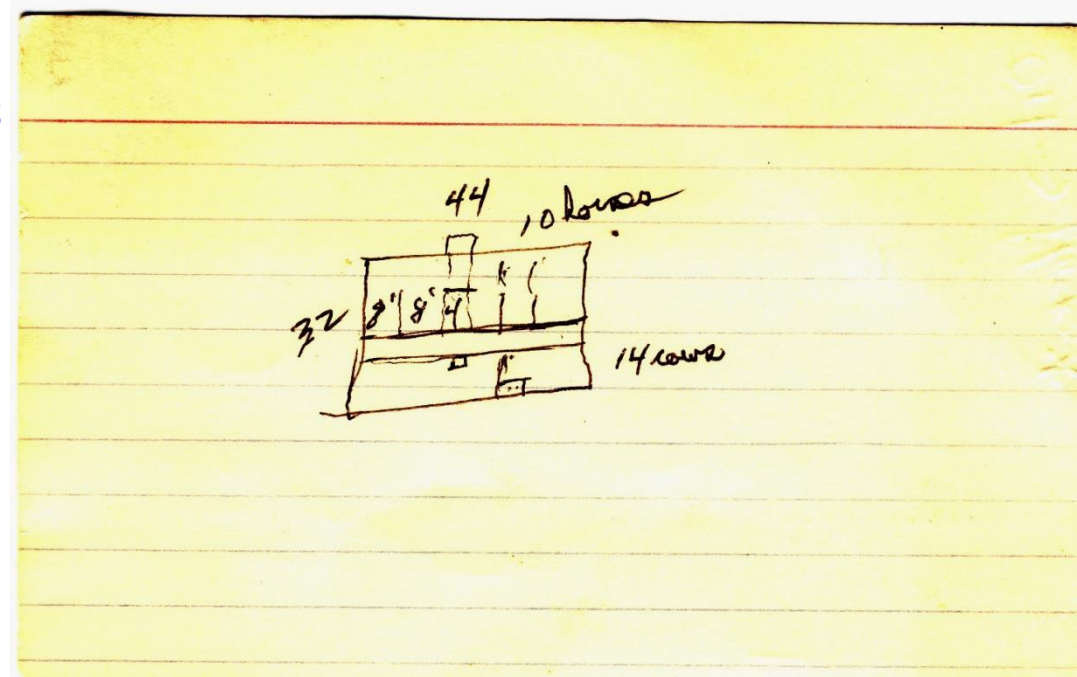
DAT barn floor plans & elevations

Poorly maintained DAT sketches made for Arrel - date unknown - of various farm building dimensions & layouts on a 3" x 5" index card

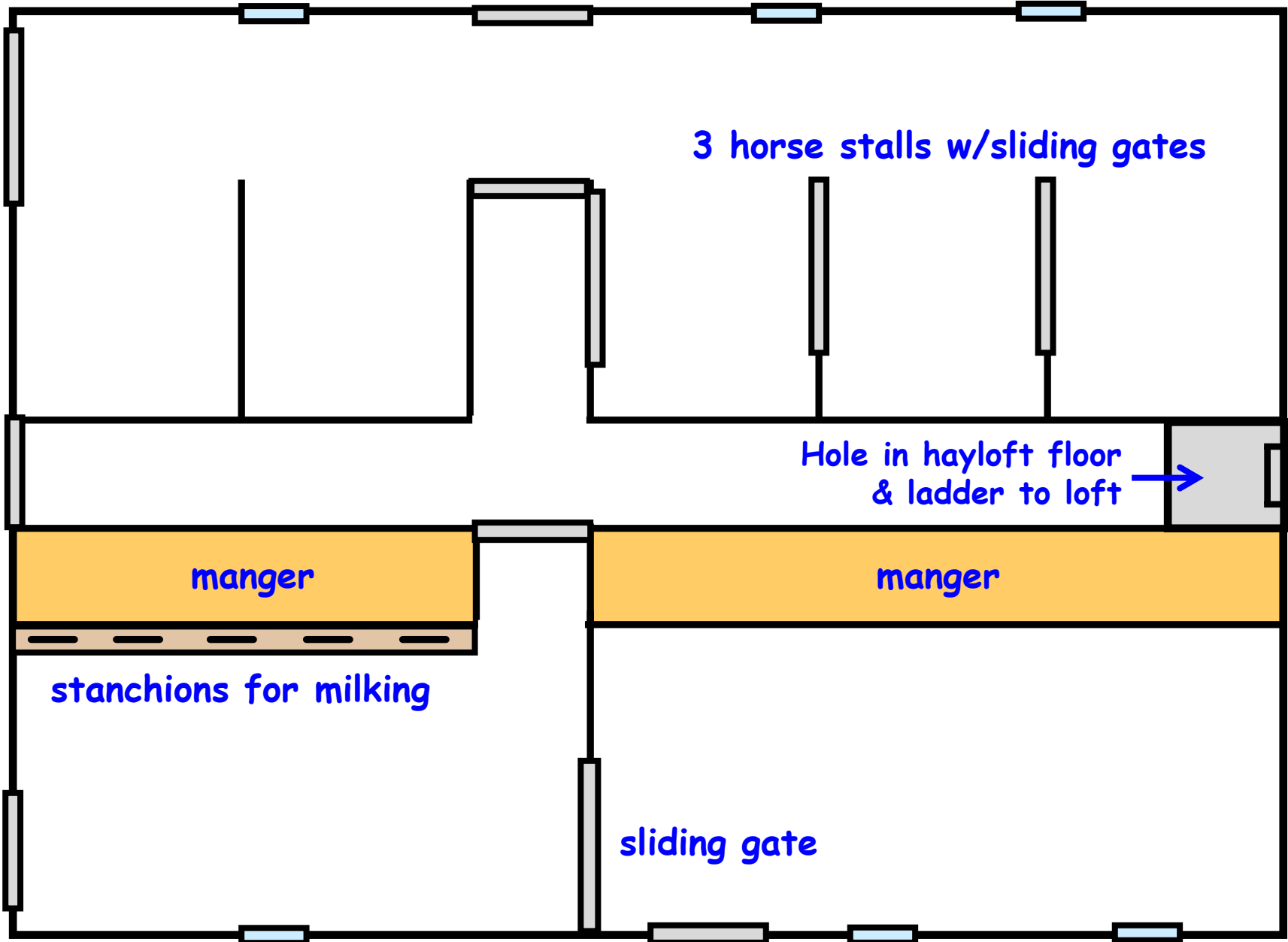
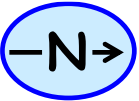
Note accommodations for 10 horses & 14 cows.

Note the dimensions - 32' x 44'.

Our chicken house was 10' x 32', and so fit exactly on the old barn foundation to become the N half of our new sheep barn!



Barn floor plan from sketch made by David A Toews



3 horse stalls w/sliding gates

Hole in hayloft floor & ladder to loft →

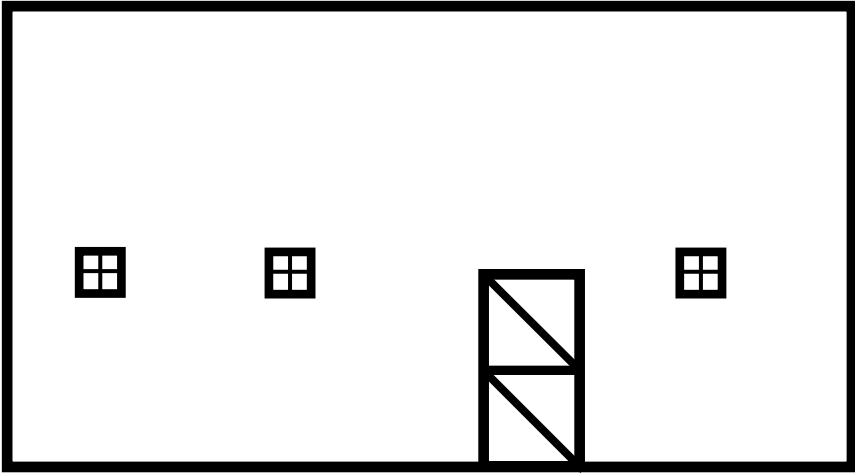
manger

manger

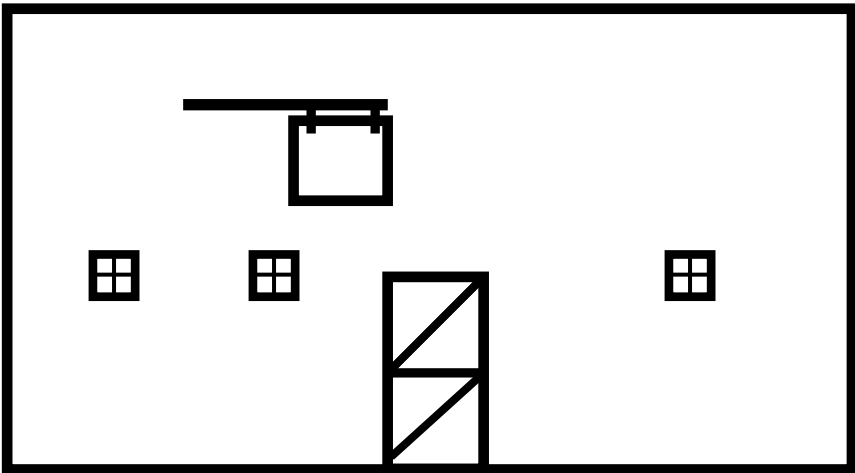
stanchions for milking

sliding gate

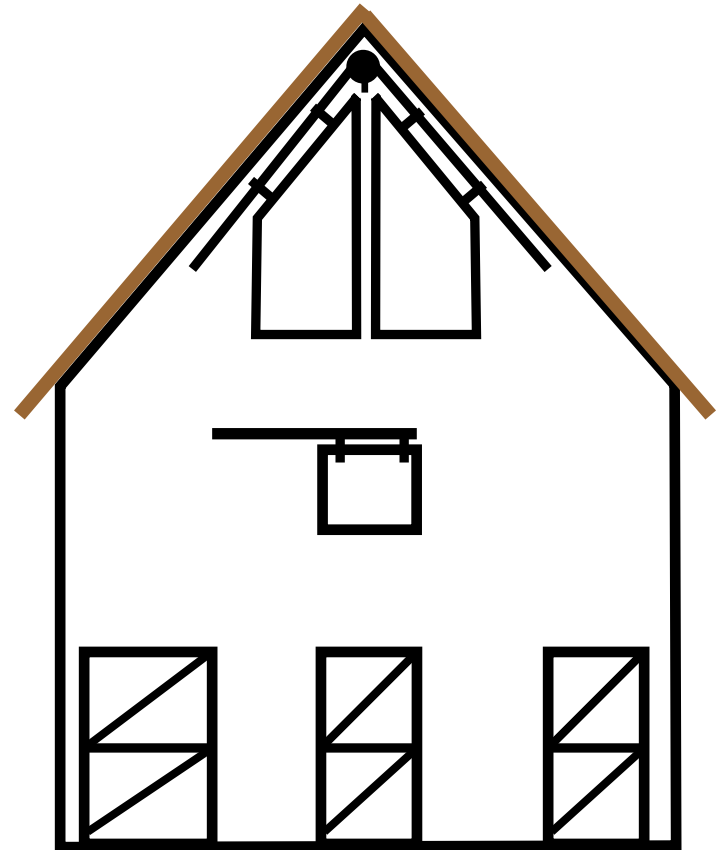
DAT barn elevations



East Side



West Side

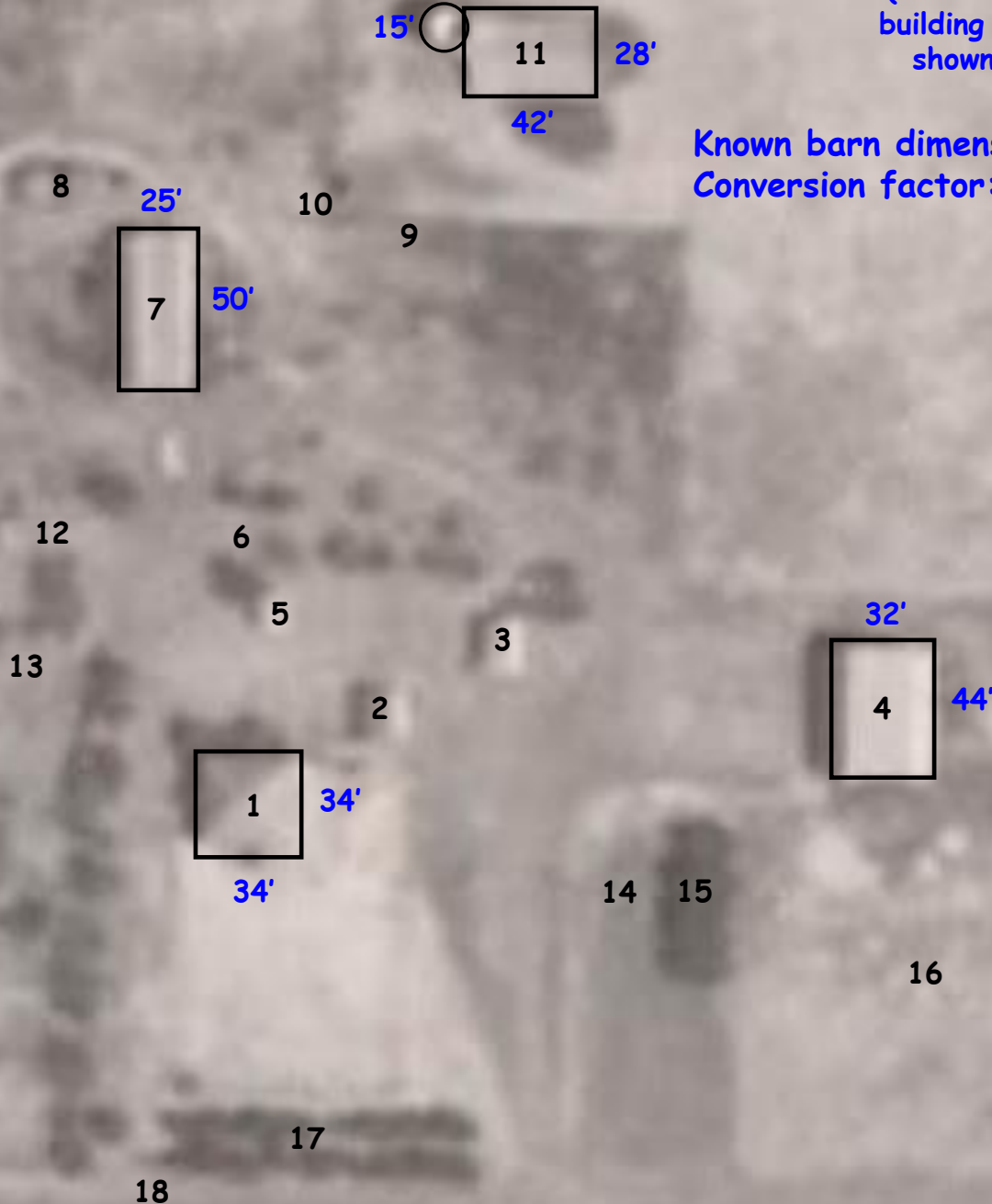


South Side

1954 Aerial Map

(used to estimate
building dimensions
shown in blue)

Known barn dimensions 32' x 44'
Conversion factor: 0.0179"/ft



LEGEND

- 1 House
- 2 Summer kitchen
- 3 Garage
- 4 Barn
- 5 Mouse house
- 6 Toilet
- 7 Machine shed
- 8 Grain bins
- 9 Pig sty
- 10 Windmill/stock tank
- 11 Silo/silo shed
- 12 Chicken house
- 13 Brooder house
- 14 Garden plot
- 15 Elm trees
- 16 Corral
- 17 Cedar trees
- 18 Half-section Road

Machine shed

Counter-clockwise from L (9/2008):

- Machine shed looking NW
- Front of machine shed looking N
- N end (back), looking ESE
- Interior view of large wooden front double doors



Machine shed (more views)

ca 2010

After collapse 2015



2004



Machine shed (interior views) Myron Toews 3/2008



Wooden slabs used during
pig butcherings



Grain auger suspended
on shed rafter

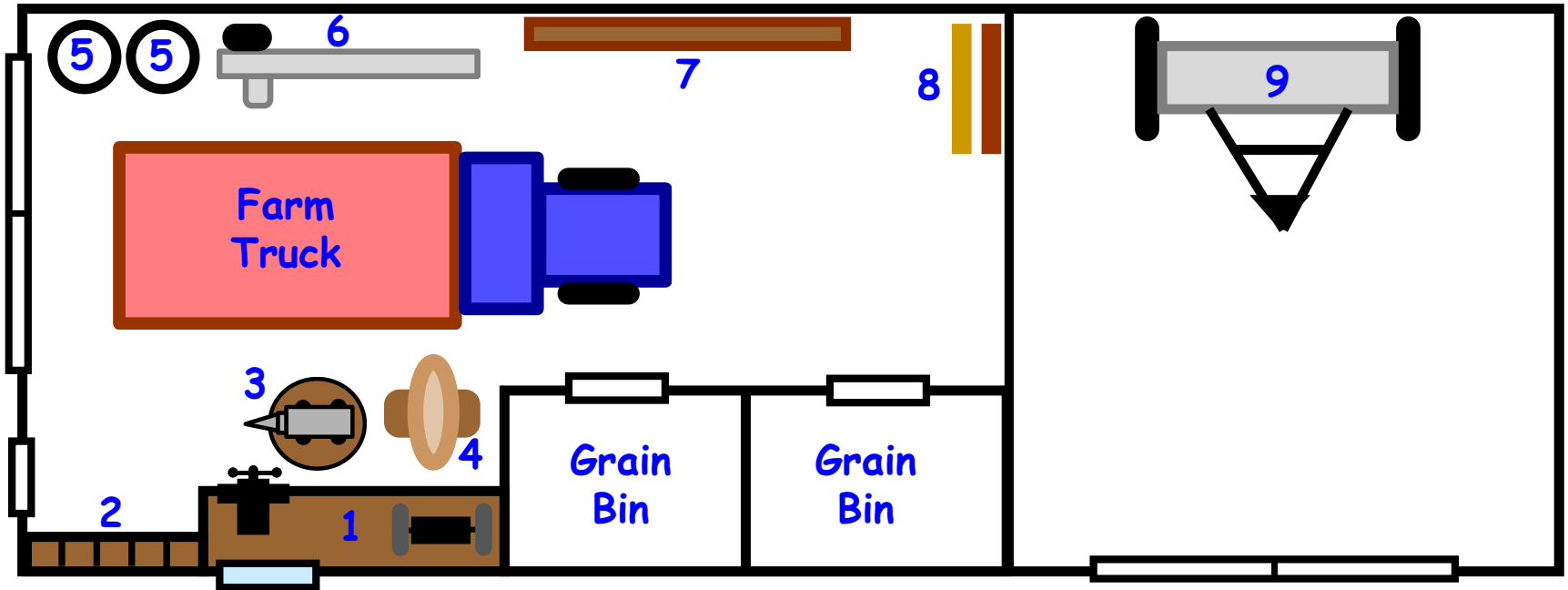


Dad's (David A Toews) boyhood
handprint on inside of E shed
door (green paint; very faint now)



Latch for main front doors

DAT machine shed floor plan



- 1 Workbench w/vice & belt-driven grinder
- 2 Chicken nests/cubbyholes (2 tiers)
- 3 Anvil on wooden stump
- 4 Sandstone grinding wheel/foot treadle
- 5 Diesel 55 gal barrels
- 6 Grain auger
- 7 Wooden stock-rack
- 8 Pig butchering wooden slab & table
- 9 Drill/seeder

Dimensions ~25' x 75' overall; N annex 25' x 25'
N annex of shed destroyed in May 1961 tornado
Remainder survived until ~2015
Siding and grain bin walls used in our bunkhouse
Workbench now in our bunkhouse workroom

Photos of our silo & silo shed

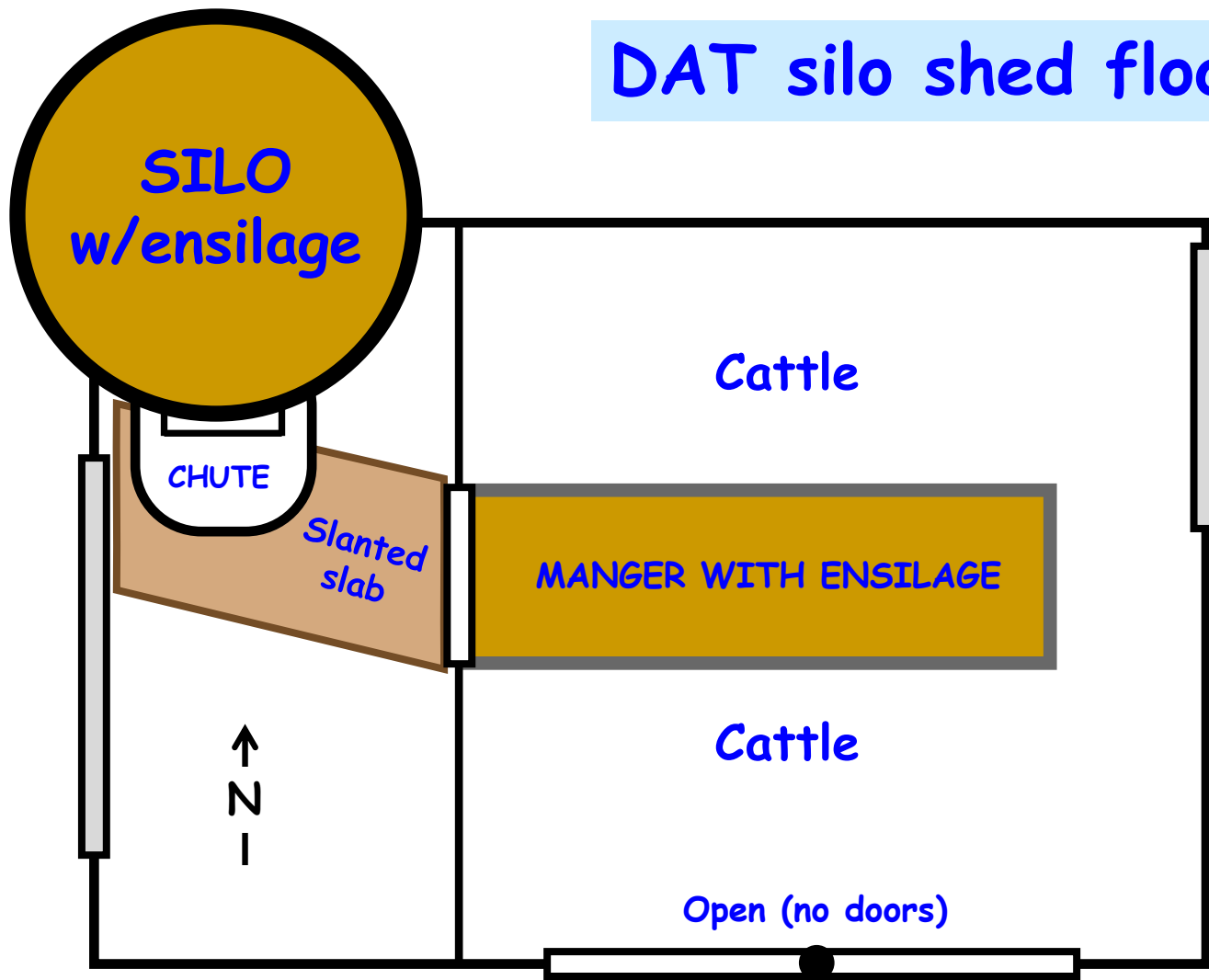
Owls (barn owls & other species) are continually nesting and rearing their young protected inside the base of our silo. They often sat on roof trusses in our machine shed as well.



1982 Sketch by Arrel



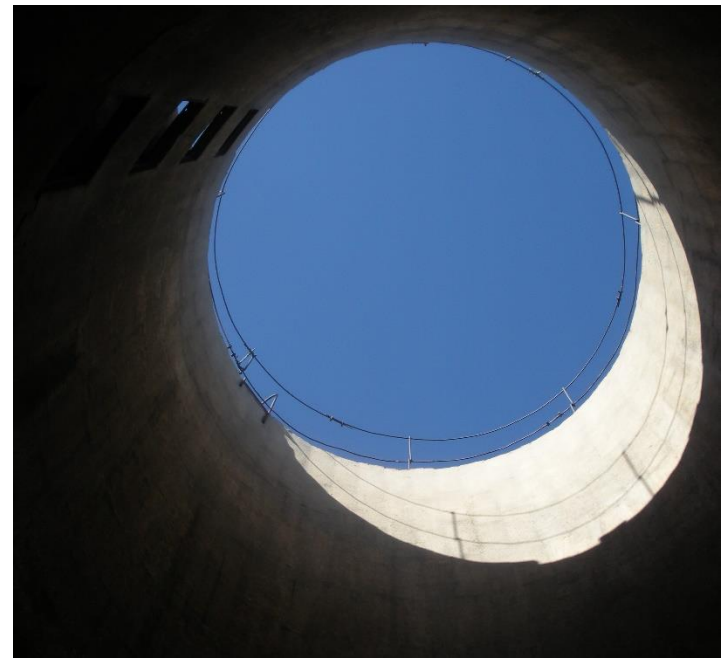
DAT silo shed floor plan



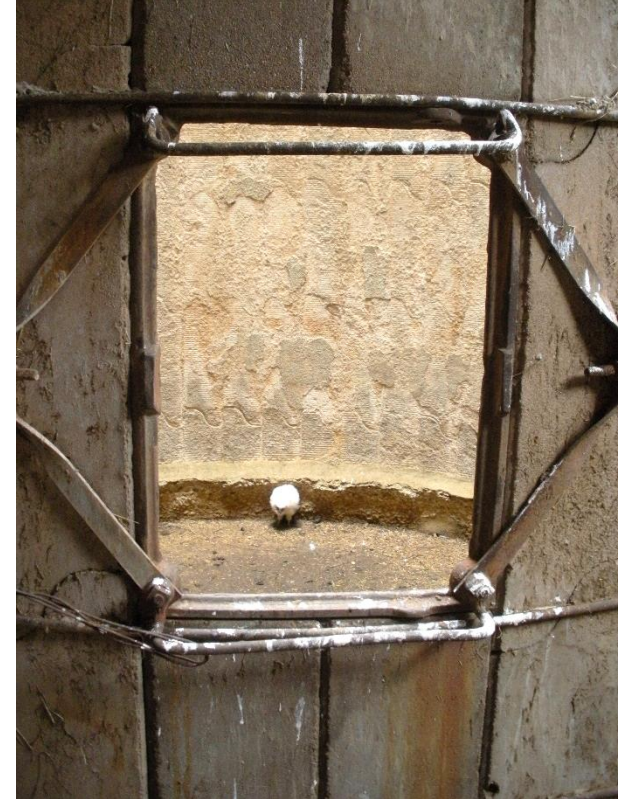
Detail of interlocking silo blocks with metal band

There was a small hayloft with bridge-plank flooring above the manger where hay bales could be stored.

Silo shed dimensions ~42' x 28'; Silo diameter ~15', height ~40', plus top cribbage rack
There was a slanted wooden slab under the chute that channeled ensilage to base of manger
Silo top had metal rod/loop frame that allowed snow fence cribbage to be installed for more ensilage
Dodson Manufacturing (Wichita) repaired/rebuilt our silo after May 1961 tornado took off top half



Clockwise: silo and silo shed, looking W from pasture; newly restored manger in silo shed, looking E, ca 2010; inside silo, looking up (note doors faintly visible at upper L and cribbage rods and loops at top (all Myron Toews)



Clockwise: interlocking silo blocks with steel bands; looking up silo chute with ladder rungs (doors not visible; white "paint" is owl excrement); silo door with owl nesting inside silo; JVT initials for Uncle Jake Thesman in silo foundation when silo constructed; wooden plug for silo doors (placed on inside of door). We used "ensilage forks" to throw down ensilage in winter; then carried and filled manger (twice) for hungry cows.



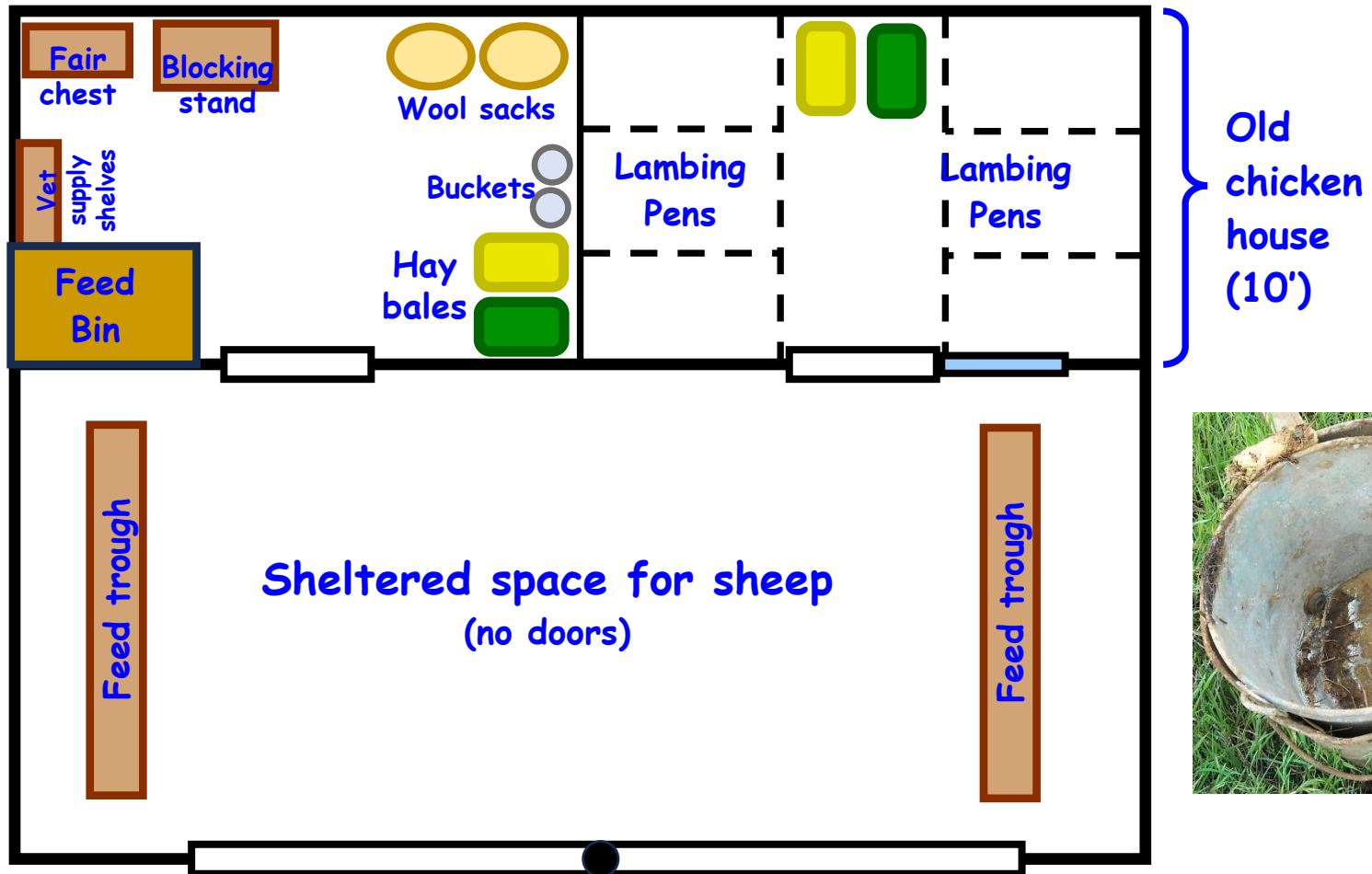
Additional farmstead photos (clockwise)

- Toews Brothers in manger of silo shed, 3/2008. Bridge plank for farmhouse mantle above & L of Arrel
- Silo, machine shed, steer feeder, 3/2008
- Grinder under elm tree by M&M combine, 3/2008
- Galen at dilapidated steer feeder, 3/2004

Myron Toews photos

Sheep barn floor plan

(1963-2009)



A tornado destroyed our big white barn in May 1961; sheep barn constructed ~1962-3
Our old chicken house (32'x10') was moved onto our destroyed barn foundation (32' x 44')
at the N end (it fit perfectly!). Additional shed added to the S, ~24' deep overall.
It was destroyed by another tornado in Summer 2009. [David A Toews 1961 Tornado](#)
Photo of sheep barn buckets @ R

Sheep barn photos



Interior of sheep barn

L: gate to one-half of former chicken house (feed room)

R: view of E portion of original chicken house façade, now N part of sheep barn.

Lambing pens were in the E half behind the window

Below: 2 views of sheep barn, both looking SE; R photo taken atop our silo, 1/1974

All Myron Toews



Our Mom Rosa Toews tending her iris behind our new house on the Kremlin blacktop

Diesel tank & Kremlin elevators @ back L; spring-tooth @ R



David A Toews in his chest-high wheat field on the home-place
Steer feeder & silo/silo shed in background

Note newer portion of silo atop original portion that remained after 1961 tornado



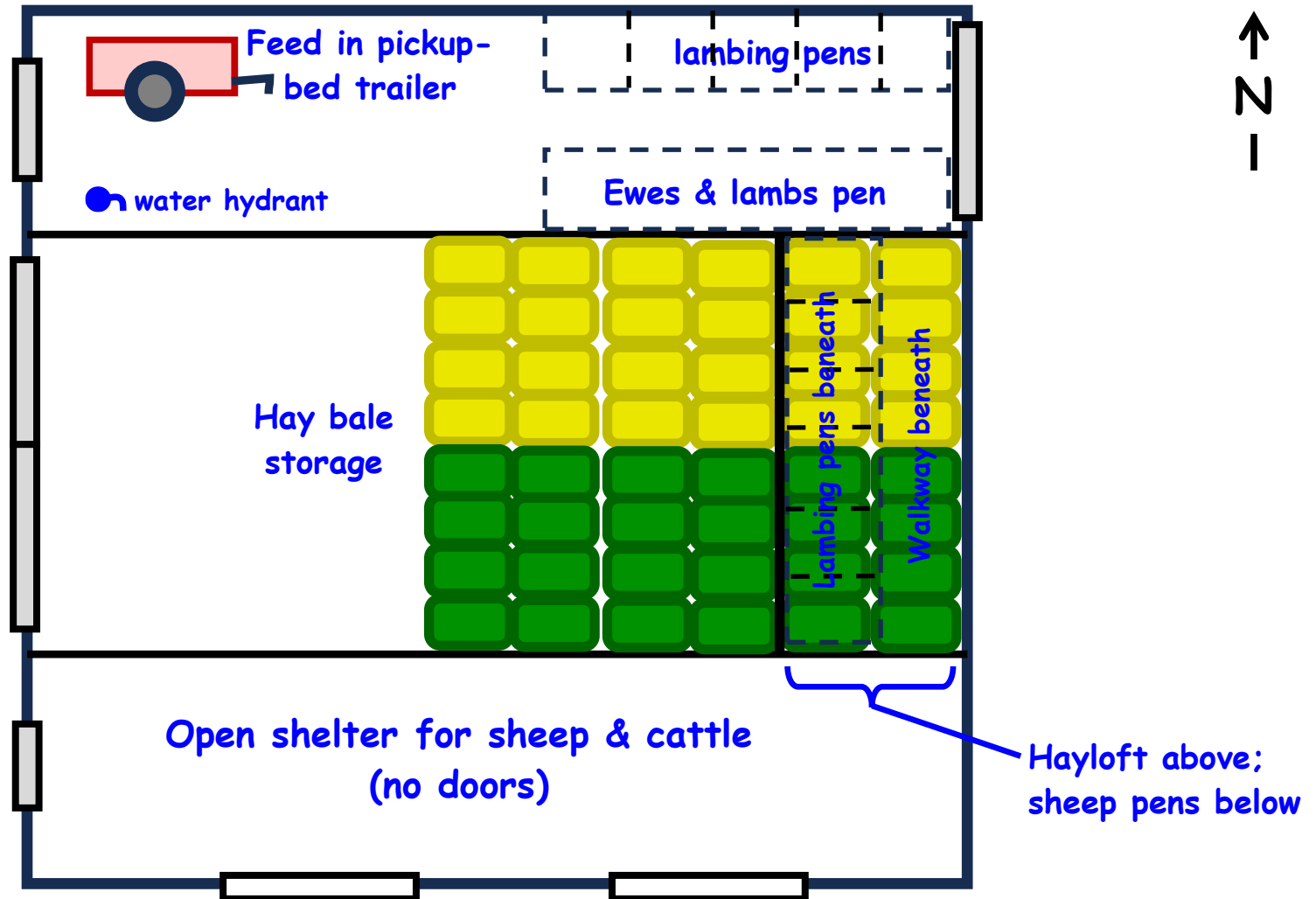
**DAT/Toews Brothers Hampshire
sheep in corral S of our newest
sheep barn in snowy winter,
looking N
(new farmstead on Kremlin blacktop)**

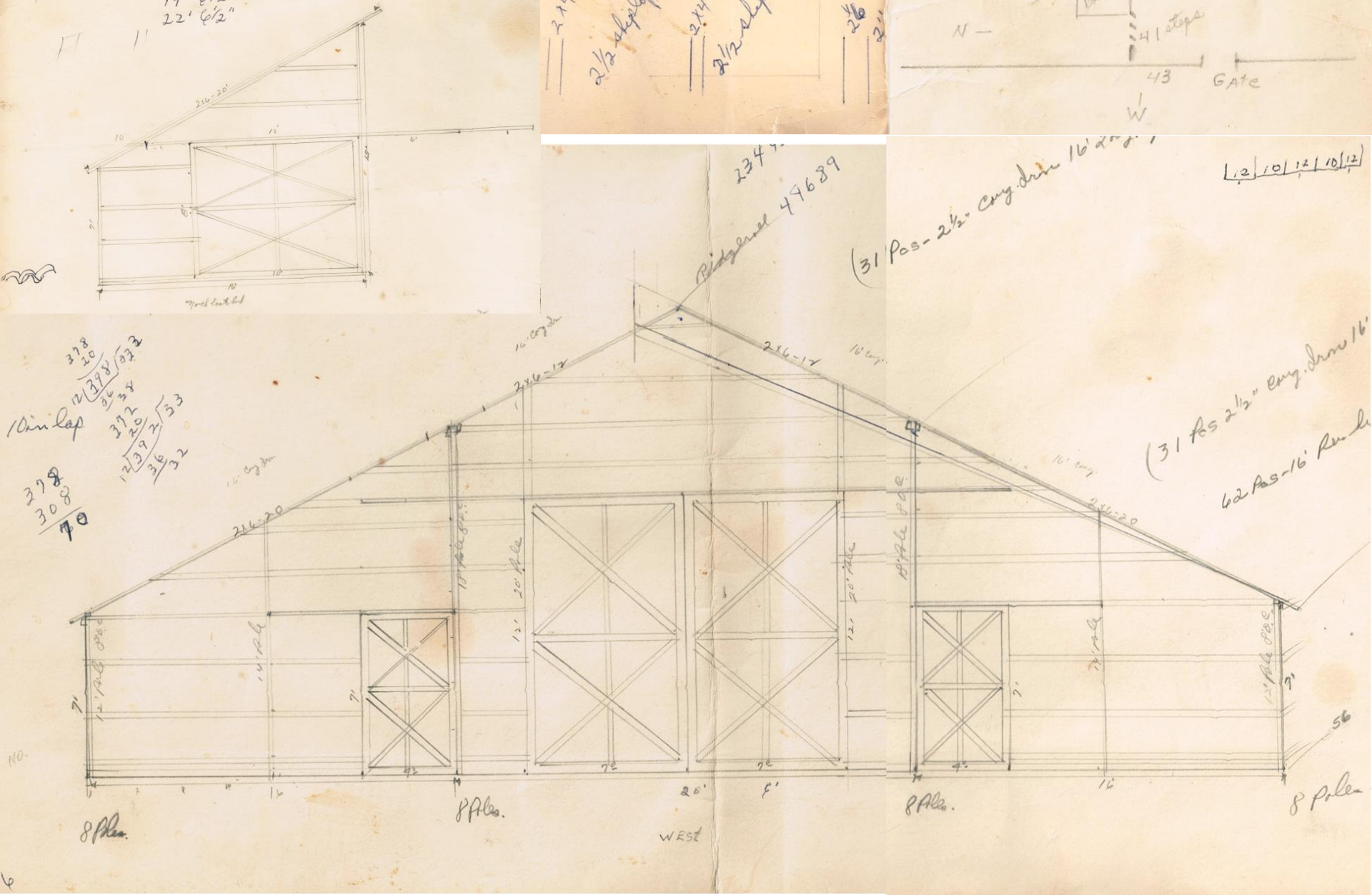
**Mitzi, our border collie, helping
DAT feed his cattle in winter
snow in our pasture by our new
farmstead along Kremlin blacktop**



Pole barn in pasture by our new home

See "blueprint" for this barn drawn by Dad (David A Toews), ca 1963, on next slide
~52' W x ~56' L; pole barn with corrugated galvanized sheet metal siding & roof





David A Toews hand-drawn "blueprint" of our new barn on the blacktop, ca 1963



Pole barn exterior photos

Clockwise: new barn looking N (sheep, goats, Mary Franz); sheep in corral, looking NW; W side of barn, looking SE; Dad in E side of barn, our new house at R, looking NW



Pole barn interior photos



Morton Building Machine Shed

The "Morton Building" machine shed (40'x72') built just S of our new home on Kremlin blacktop was not divided inside - plenty of room for combine, wheat trucks, stock trailer, pickups and more. Workshop was in NE corner, by window.



L: New machine shed

Lower L: Aerial view with combine, grain truck, stock trailer

Lower R: Menno Franz on Honda 3-wheeler by Morton shed



Archival photos of farmstead



**DAT house with original barn,
looking ENE**

**Note W door on house and
woman (maybe Mom?)
on porch
(date unknown)**

**DAT house & old summer kitchen
(no E door), looking WNW
(date unknown)**





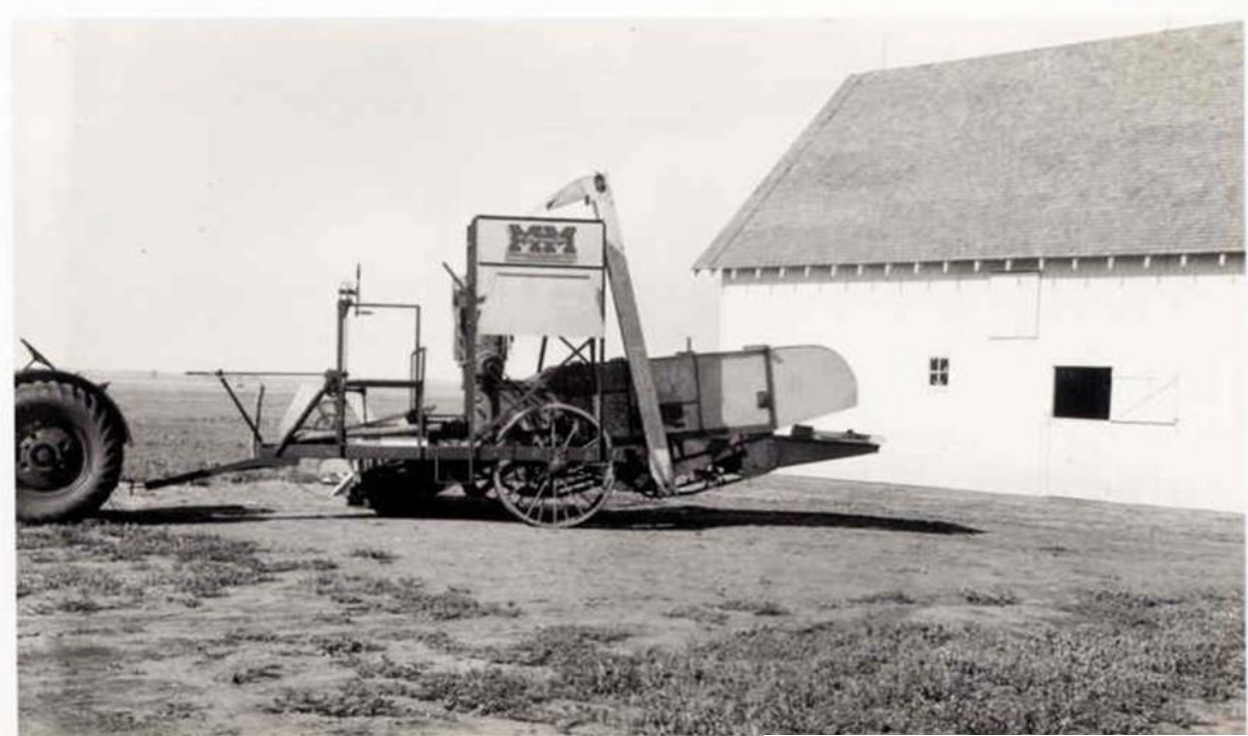
Galen in front of summer kitchen/wash house. Push-type reel lawn mower against building, sit-down scooter behind him, & cast-iron toy tractor to his R. Cream separator skimming discs drying on rack beside door. Note gas pump between wash house and garage. ca 1950

David A Toews in front yard, garage with auto behind him. Note "post pile" behind him and older machine shed to R of garage. ca 1940s



Before there were combines, there were binders, hayracks and threshing machines powered by steam engines. Threshing crew on Half-section Road in front of George P Toews (original) barn. Wider view showing more of cookshack at bottom. 1920s-30s





**M&M combine (new?) & John
Deere tractor in front of
DAT (2nd) barn**



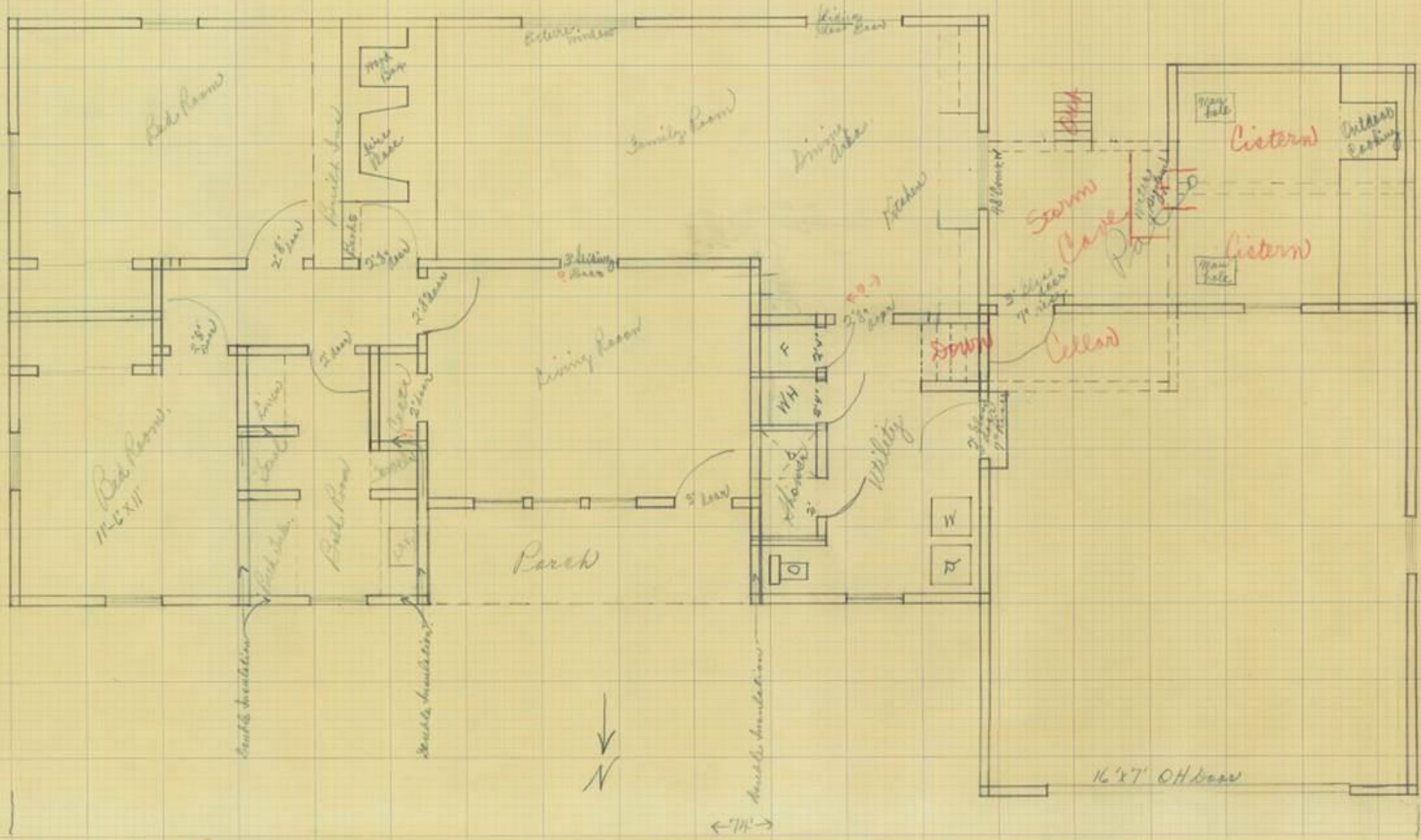


Case combine & lug-wheel tractor harvesting wheat

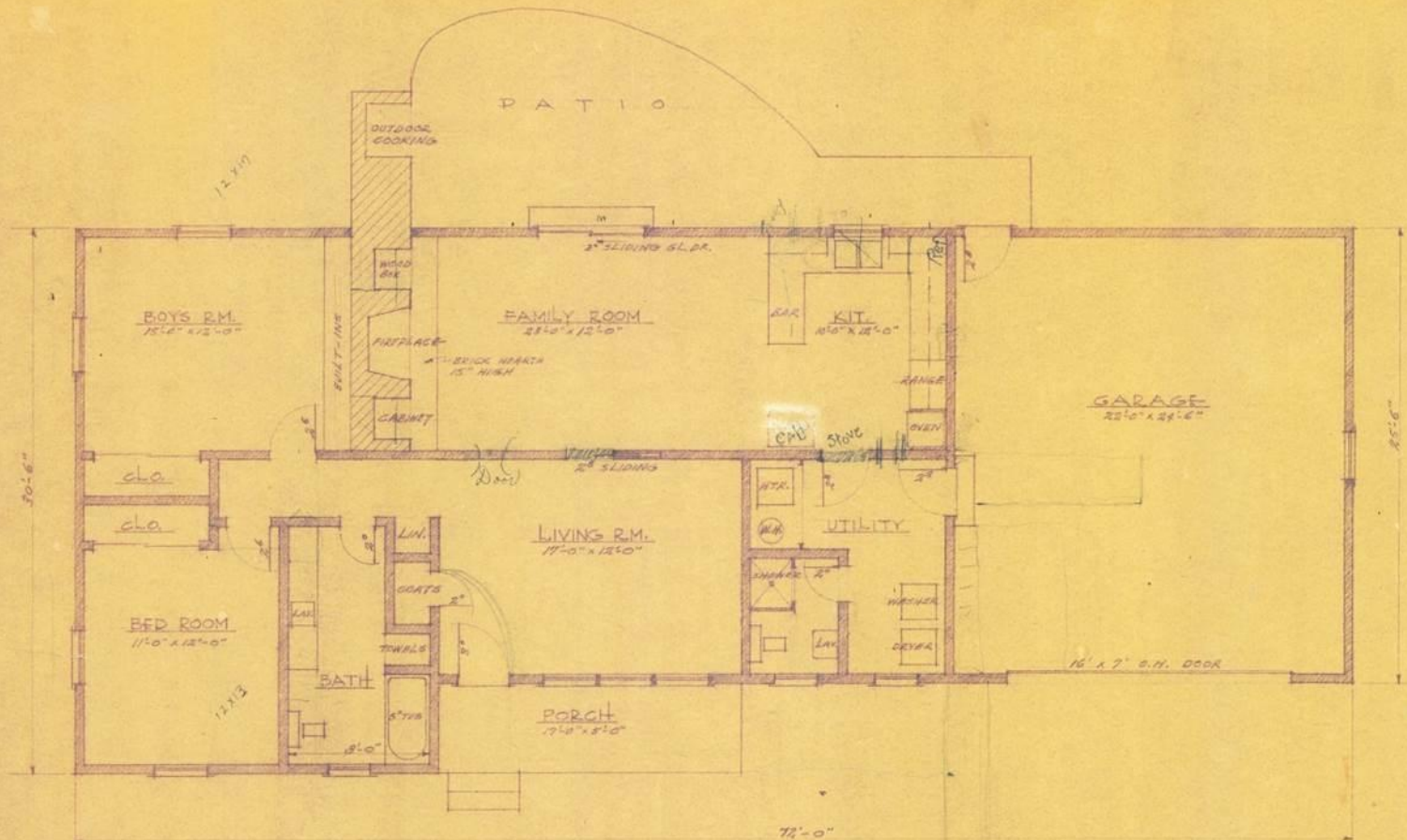
Dates unknown

**Old pig pen w/ feeder & pigs;
machine shed & windmill in back,
looking W. Different shingles
denote annex to machine shed
Note junk pile already present
E of machine shed &
circular galvanized grain
bin behind windmill**





Hand-drawn "blueprints" of our new home
 Probably Grandpa Jacob A Voth Sr & Mom (Rosa M Toews)
 1961-62



FLOOR PLAN
SCALE 1/4" = 1'-0"

PROPOSED RESIDENCE
FOR
MR. & MRS. DAVID & TOEWS

Actual blueprints for our new home
1962



**New DAT/RMT house along
Kremlin blacktop
under construction
(1961-62)**

**Note old barn siding used
for roof decking;
Most studs, joists & rafters
were from lumber salvaged
from our old house & barn
after 7 May 1961 tornado**

**New DAT/RMT house
along Kremlin blacktop
(now Keowee Road)**





Front and rear views of our new house on Kremlin blacktop, ca 1963



**Our new house on Kremlin blacktop, with lawn and shrubs well-established
date unknown**



A blurry photo of the Toews Brother's "study wall" in our bedroom in our new house on the Kremlin blacktop. Note Arrel's orange chair in the middle (where else??) and his Gilbert microscope and books. Myron's 4-H trophies too!



Addition to S side of our house, ca 1986

Sunroom, dining nook

built over cisterns/patio

Design by Anita Toews; construction by?



Additional sunroom/dining nook construction photos (ca 1986)





“New” DAT/RMT farmstead along Kremlin blacktop

**Note Morton building, truck, farm pickup, stock trailer, Gleaner C combine
(JAV farmstead & Houghtaling Farm barn & shelterbelt @ upper R)**

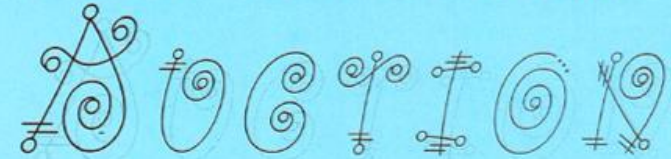
DAT Farm Sale - 8 May 1999



Above: DAT family members on iron baler at farm sale;
Below: iron baler waiting to be sold



Machinery • Collectibles • Household



SATURDAY, MAY 8, 1999 • 10:00 A.M.

SALE LOCATION: 1 1/2 miles west of Kremlin, Oklahoma on blacktop road; OR, 7 miles north of Enid, Oklahoma on Highway 81 to Midway Country Store, then 3/4 mile east.

TRACTORS/COMBINE: John Deere 4450 tractor, one owner, low hours, power shift transmission, 3 point, PTO, 20.8x38 rubber, factory duals; Ford 801 Select-O-Speed, 3619 hours, manual transmission, 3 point, PTO; Gleaner CH combine, 18 ft. header, gas engine, cab, water cooler.

VEHICLES/TRAILER: 1988 Chevy 1500 Silverado pickup, automatic, 54,117 miles; 1958 Chevy 60 Series Viking truck with steel floor, bed and hoist; Chevy 1 1/2 ton truck with steel floor, bed and hoist, wood sides, Honda ATC 1103 wheeler; aluminum loading ramp for cycle; Bullmobile 6x16 stock trailer with top.

MACHINERY: John Deere 9 ft. front dozer blade; John Deere 32 ft. foldback springtooth with harrow evener; Miller 14 ft. offset disc; 2 - John Deere 16x8" DR grain drills, galvanized box with Mabarr 2 drill hitch; John Deere 14x10" hoe drill; Massey Ferguson 7 ft. sickle mower; 10 ft. dirt scraper; Jeffries 12 ft. chisel; Kent 24 ft. portable springtooth; Flex King 3 blade plow; 3 sections Flex King pickers; Waco Wac-A-Trac; drag type springtooth; 6 ft. rotary mower; 2 axle swather trailer, 10x16, wood floor.

SHOP: Magna Force 4 hp. portable air compressor; anvil; vice; battery chargers; hydraulic jacks; skil saw; socket set; all types hand tools; Hand-i-man jack; chains; post drivers; fence stretchers; come-alongs; lug wrenches; hammers; etc.

MISCELLANEOUS FARM: 50 bushel round grain bin on wheels; 2 - 50 bushel grain bins with outlets; hydraulic bale spike; water tanks; creep feeders; round bale feeders; Ford 3 point stinger; 3 point bale spike; woven wire; 18.4x26 tire and rim; several highline poles; steel and wood posts; 200 gallon 3 point spray rig with booms; pickup bed trailer; 200 and 300 gallon fuel tanks with stands; Homelite chain saw; hedge trimmers.

COLLECTIBLES: 1940's 3 piece bedroom suite; ornate 4 drawer chest of drawers; round oak drop leaf table; ornate metal baby crib; old metal baby stroller; glass front legal book case; oak hall tree; radio with wooden cabinet; cut and pressed glass; Cross cut saws; old wrenches; radio; milk cans; iron wheels; cream separator; scales; cistern pump with cups; Champlin 5 gallon cans; cobbler shoe trees; wool sack holder; grapple fork; sad iron; hand plow; 3 tooth cultivator; horse drawn plow; 2 - cast iron kettles; RC Crown bottle; Foust Better Beverage bottle; 78 rpm records; butter churn; assorted crocks, Western Stoneware; blue porcelain tub; sausage press; lanterns; child's wagon; cast iron seats.

HOUSEHOLD: 4 oak chairs; dining room table with 6 chairs; matching buffet; Whirlpool refrigerator (almond color) with ice maker; Whirlpool washer; Kenmore dryer; coffee table; assorted tables, night stands and lamps; nice oak secretary with bookshelves; small color TV with remote; oak rocker; 3 - small cedar chests; 2 file cabinets; cast iron lawn furniture (love seat, 2 chairs and table); kitchen utensils; set of 12 stainless steel silverware in wood case; dishware.

MORE ITEMS TOO NUMEROUS TO MENTION

TERMS: Cash or approved check day of sale.

COMMENTS: Mr. Toews has moved to an assisted living center; therefore, he no longer needs these items. All items appear to have been well maintained. Collectibles and household items were in boxes so we don't have a complete inventory. Information regarding the sale items is taken from sources believed to be reliable; however, no guarantee is made by the Auction Company or its employer. Buyers should satisfy themselves as to type, size, age and condition prior to the auction. Statements made day of sale take precedence over all advertising.

LUNCH WILL BE AVAILABLE

DAVID TOEWS - SELLER

<p>KEITH JAMES, Broker Home - (580) 532-6226 Office Fax: (580) 233-9801</p>	<p>JKJ REAL ESTATE & AUCTION CO.</p>	<p>L.D. RAPP STEVE STINSON Sales Associates</p> <p>KANDICE O'HEARN LORIS JOHNSON DEAN HEDGES Associate Brokers</p>
<p>Office: 1301 E. Willow, Enid, OK • (580) 233-9800</p>		<p>WES DOTSON Auctioneer</p> <p>ERNEST McBLAIR Ringman</p>





**Aerial ASCS map of
30-24N-6W with
Houghtaling Farm
outlined in yellow**

**Our farm home* is visible
to the trained eye, and the
shelterbelt, pasture &
waterway are delineated.**

**US-81-60-64 is on the
right and W H Holden Rd
on the top
(it is no longer dirt!).**

**There is no road on the W
boundary of this section.**

**The Butler Farmyard is
visible at upper L corner
(photo ~2012)**

**Note resolution is high enough
to allow some magnification of
the image**



30-24N-6W Section Map (2005)

Houghtaling Farm outlined in yellow

Butler Place yard & JAV homestead visible @ top L & R, respectively. John Janzen farmstead at lower center; Uncle Jake/Aunt Anna Thesman farmstead @ lower R; US-81 visible @ R margin

NW/4-30-24N-6W Map (2005)

Our Houghtaling Farm

Butler Place yard visible @top L.
Shelterbelt, waterway, barn & pond visible
Note alfalfa patch in NW corner of farm

Houghtaling Farm



**“Little Farmhouse
on the Prairie”
near Kremlin OK**

Bunkhouse for grandkids

